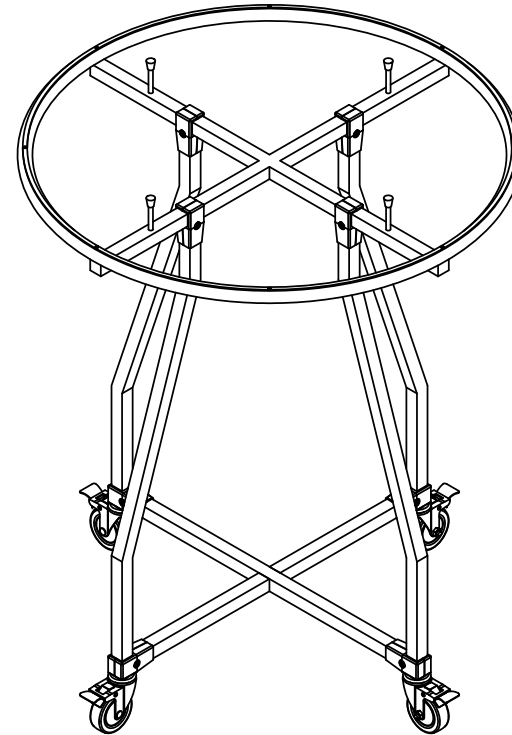




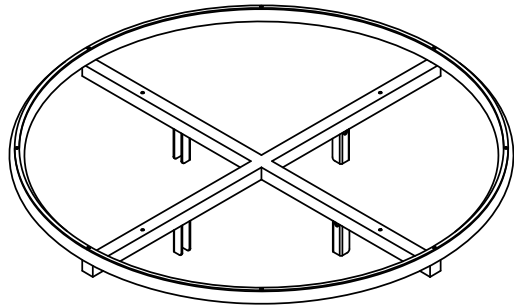
BURNSIDE

ASSEMBLY INSTRUCTIONS

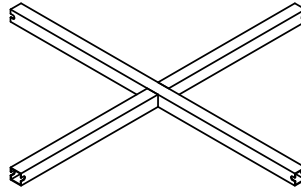
ROUNDER WITHOUT TOPPER :: 292&299 - ROUND



PART LIST:



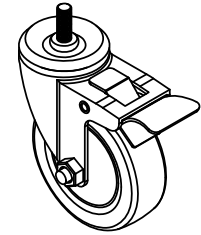
1X. TOP RING



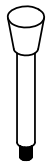
1X. BOTTOM RAIL



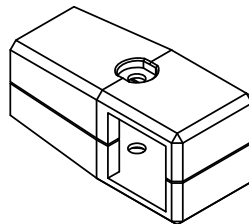
4X. BENDED LEG



4X. STEM CASTER (4" DIA. WHEEL W/ BRAKE)



4X. TOPPER PIN



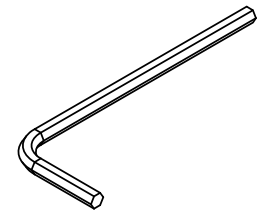
8X. SET CONNECTOR



8X. JOINT CONNECTOR
BOLT 1/4"-20 X 1 5/8"

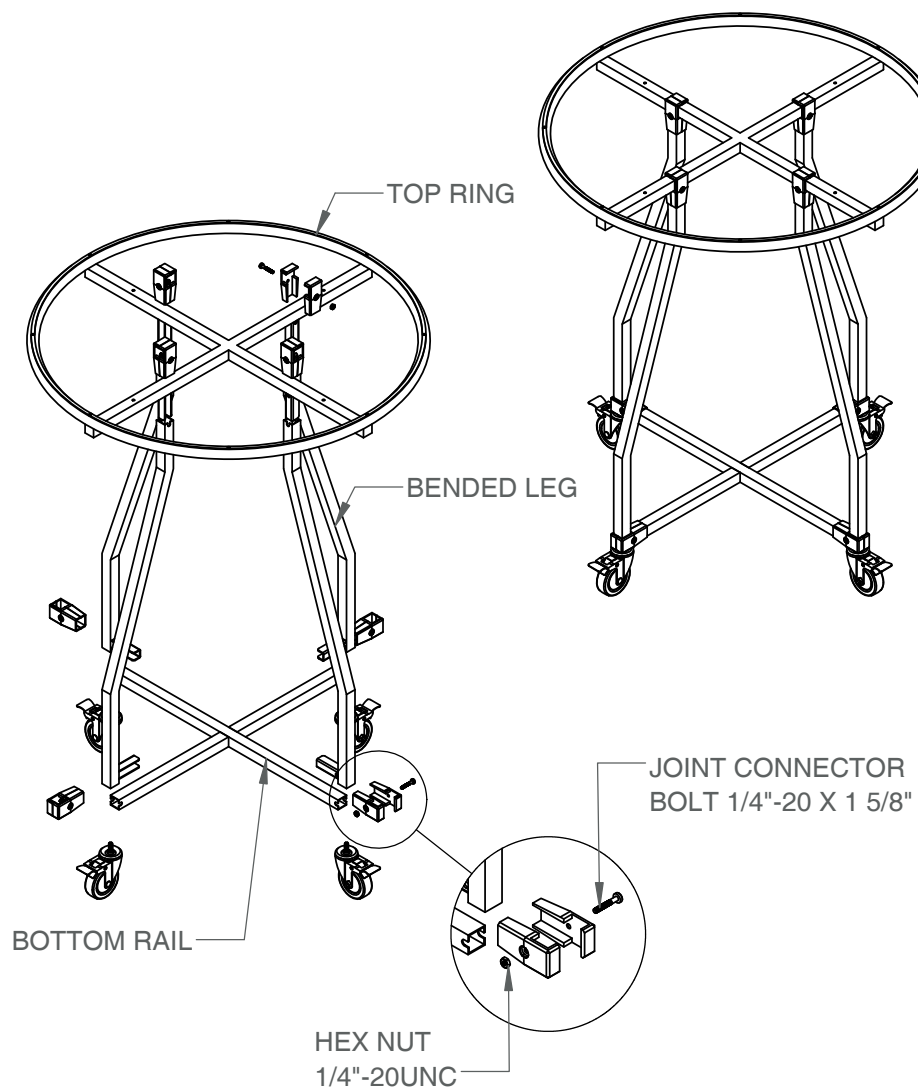


8X. HEX NUT
1/4"-20UNC



1X. L-KEY FOR 1/4"

STEP 1:



STEP 2:

