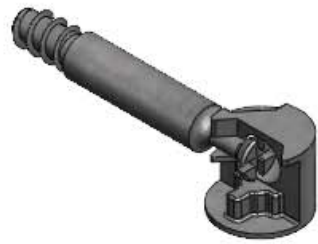
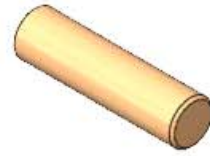


ASSEMBLY INSTRUCTIONS - 050 - SW - RSWT - (ROTATING SLATWALL TOWER)



CAMLOCK (X32)



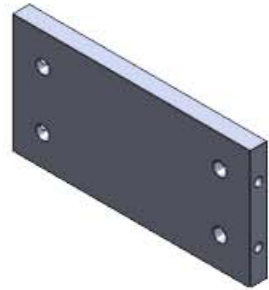
WOOD DOWEL (X4)



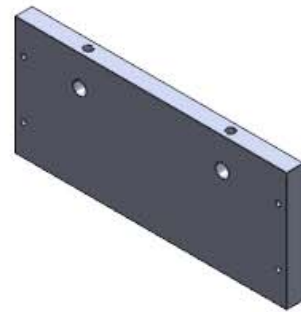
FLAT HEAD WOOD SCREW
#8 X 0.625" (X8)



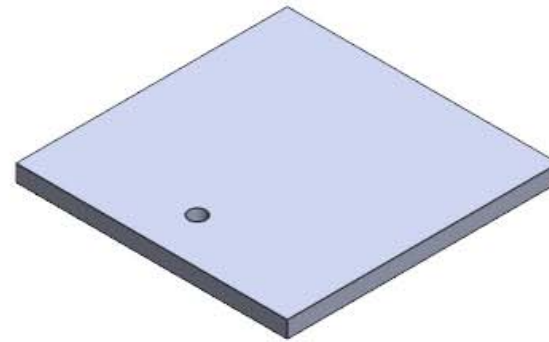
10" LAZY SUSAN



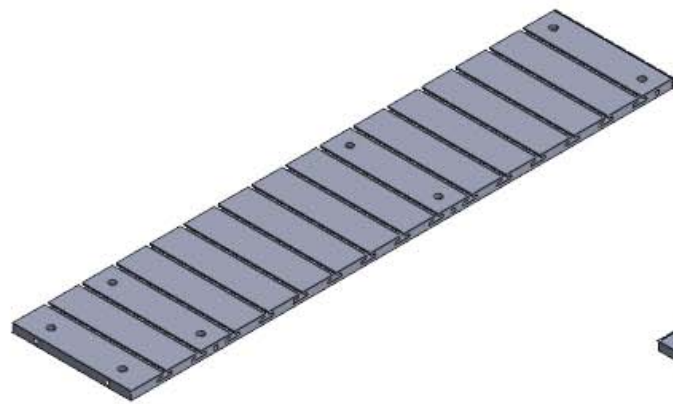
A. BASE SIDE PANEL - A (X2)



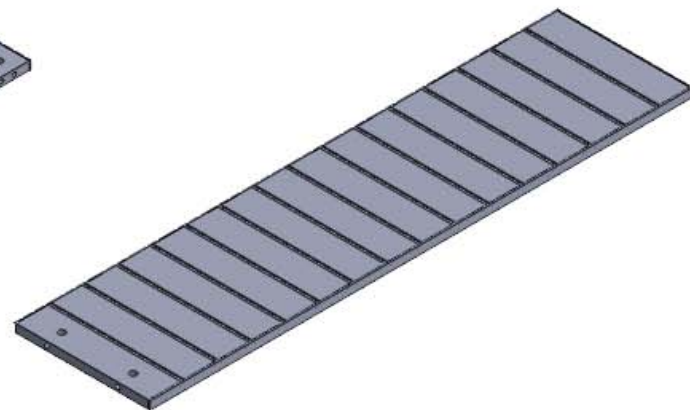
B. BASE SIDE PANEL - B (X2)



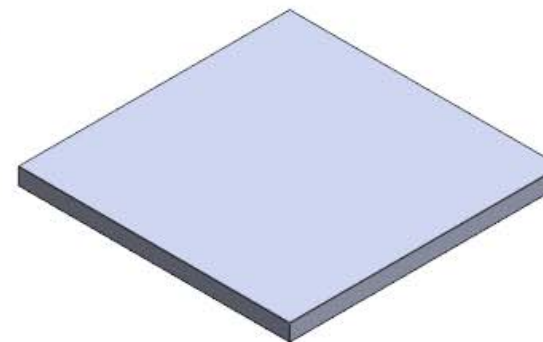
C. BASE - TOP PANEL (X1)



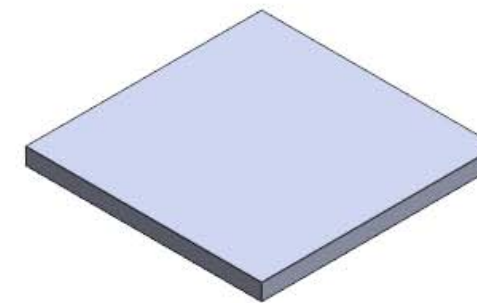
D. SLATWALL PANEL - A (X2)



E. SLATWALL PANEL - B (X2)



F. BOTTOM PANEL (X1)



G. TOP PANEL (X1)

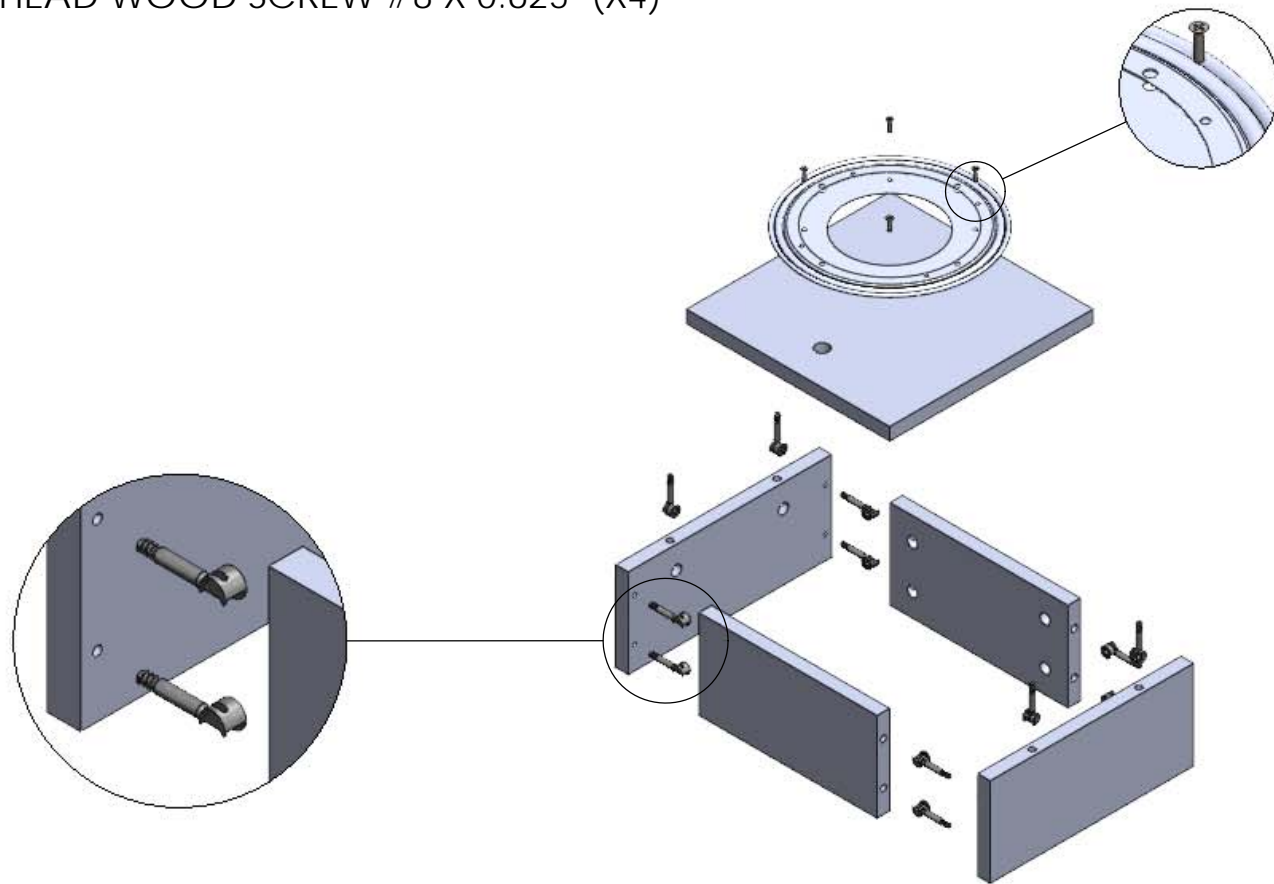


ASSEMBLY INSTRUCTIONS - 050 - SW - RSWT - (ROTATING SLATWALL TOWER)

STEP 1:

1. ATTACH LAZY SUSAN ON THE BASE TOP PANEL BY WOOD SCREW;
2. SCREW THE BOLTS OF CAMLOCK INTO BASE SIDE PANEL - B & BASE TOP PANEL;
3. CONNECT BASE SIDE PANEL - A & BASE TOP PANEL BY CAMLOCKS;

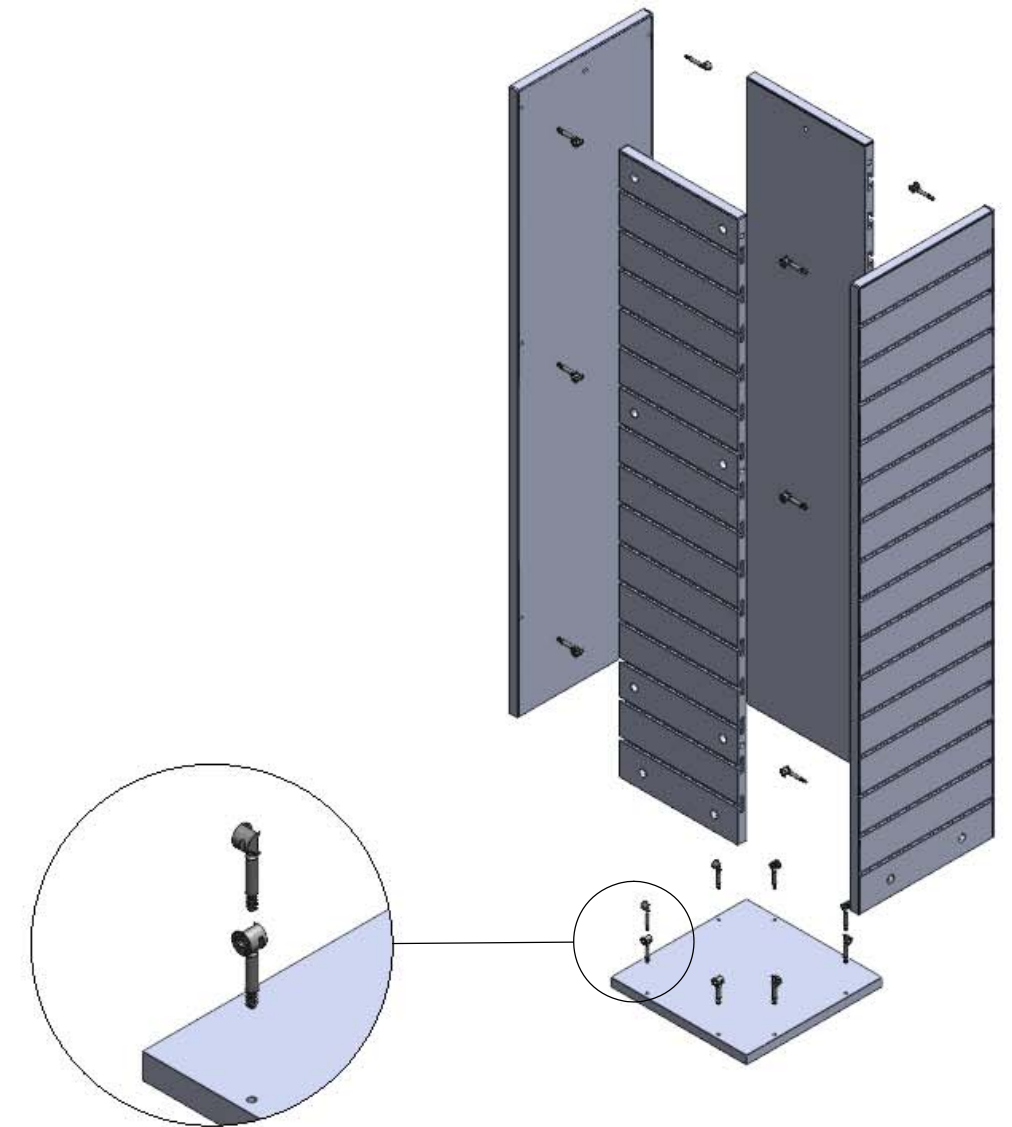
10" LAZY SUSAN (X1)
BASE SIDE PANEL - A (X2)
BASE SIDE PANEL - B (X2)
BASE TOP PANEL (X1)
CAMLOCK (X12)
FLAT HEAD WOOD SCREW #8 X 0.625" (X4)



STEP 2:

1. SCREW THE BOLTS OF CAMLOCK INTO SLATWALL PANEL - B & BOTTOM PANEL;
2. CONNECT SLATWALL PANEL - A & B & BOTTOM PANEL BY CAMLOCKS;

SLATWALL PANEL - A (X2)
SLATWALL PANEL - B (X2)
BOTTOM PANEL (X1)
CAMLOCK (X20)

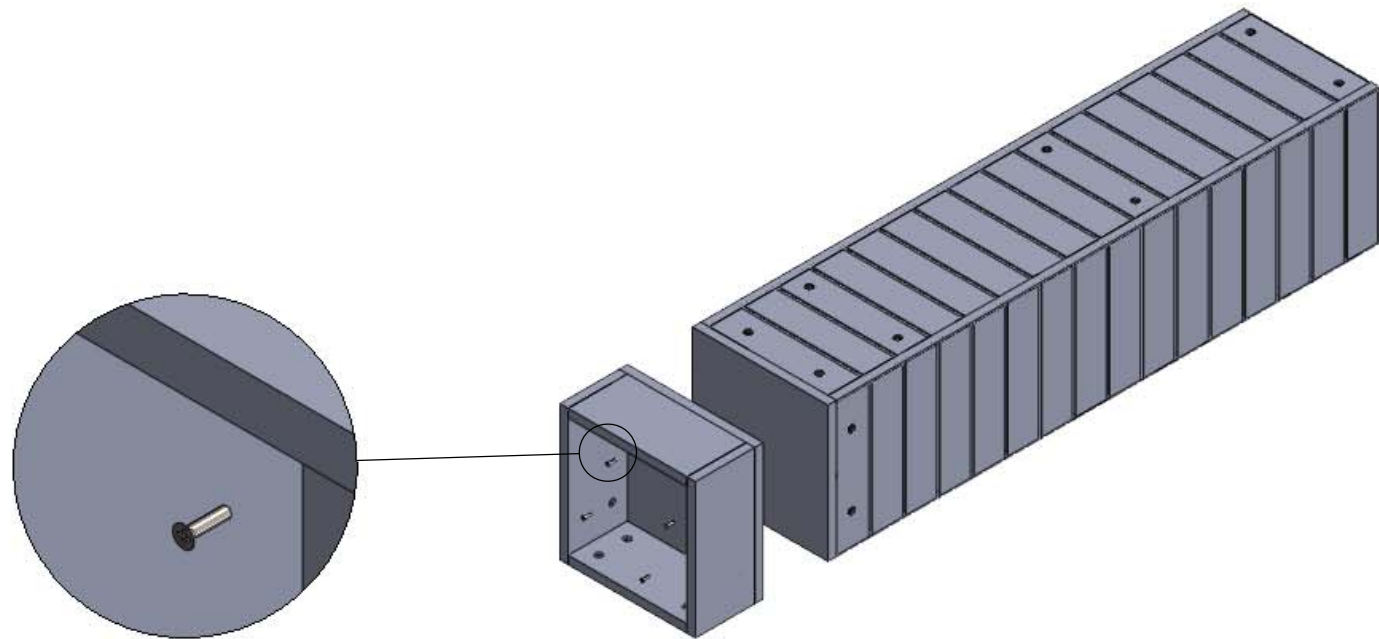


ASSEMBLY INSTRUCTIONS - 050 - SW - RSWT - (ROTATING SLATWALL TOWER)

STEP 3:

1. CONNECT BASE ASSEMBLED & SLATWALL ASSEMBLED BY WOOD SCREWS;

BASE ASSEMBLED (X1)
SLATWALL ASSEMBLED (X1)
FLAT HEAD WOOD SCREW #8 X 0.625" (X4)



STEP 4:

1. INSERT WOOD DOWELS INTO SLATWALL PANELS;
2. PLACE TOP PANEL ON TOP;

TOP PANEL (X1)
WOOD DOWEL (X4)

